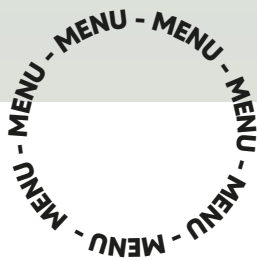


Moscow mule	11
VODKA KETEL ONE, FEVER-TREE GINGER BEER, LIME, MINT	
Gin Tonic	10
GIN TANQUERAY, FEVER-TREE INDIAN TONIC, LEMON, ORANGE	
Queen of Gin	12
GIN TANQUERAY, FEVER-TREE SWEET RHUBARB AND RASPBERRY TONIC, LEMON, RED FRUITS	
Dark & Stormy	11
RUM PAMPERO ESPECIAL, FEVER-TREE GINGER BEER, LIME	
Gin Tonic 0°	10
GIN TANQUERAY 0,0°, FEVER-TREE INDIAN TONIC, LEMON, ORANGE	
TAP BEER	
Stella 30CL	2,9
Hoegaarden blanche 30CL	3,5
BOTTLED BEER	
Corona 33CL	4,5
Corona bucket (5+1) 33CL	22,5
Corona 0° 33CL	4,5
Hoegaarden rosé 25CL	3,5
Victoria 33CL	4,5
Delta IPA 33CL	4,5



Valvert 50CL 2,5

Perrier 50CL 2,5

Homemade Iced Tea 30CL 3

Community Cola 33CL 4

CLASSIC OR SUGAR FREE

Tao 25CL KOMBUCHA & ROSEHIP 4

OR GINGER & DRAGONFRUIT

Fever-Tree 20CL INDIAN TONIC, SWEET 4

RHUBARB AND RASPBERRY TONIC OR GINGER BEER

Espresso, Lungo, Cappu 2,5 3 4

Penneautier (WHITE WINE) 5 25

CHARDONNAY, PAYS D'OC

Les Fumées Blanches (ROSÉ) 5 25

GRIS DE SAUVIGNON, LANGUEDOC

Sarrat Del Mas (ORANGE WINE) 6 30

MAS JANNEIL, FRANCE, VIN DE PAYS

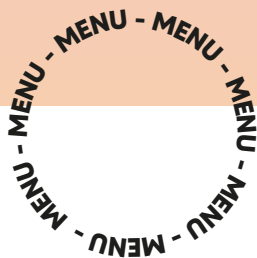
Caramel Pop-corn 4

Potato chips 3

PAPRIKA OR SALTED OR SALT&PEPPER



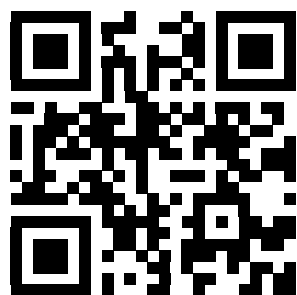
CASHLESS



City map	1
Brussels guide	5
Comic Wall guide	4

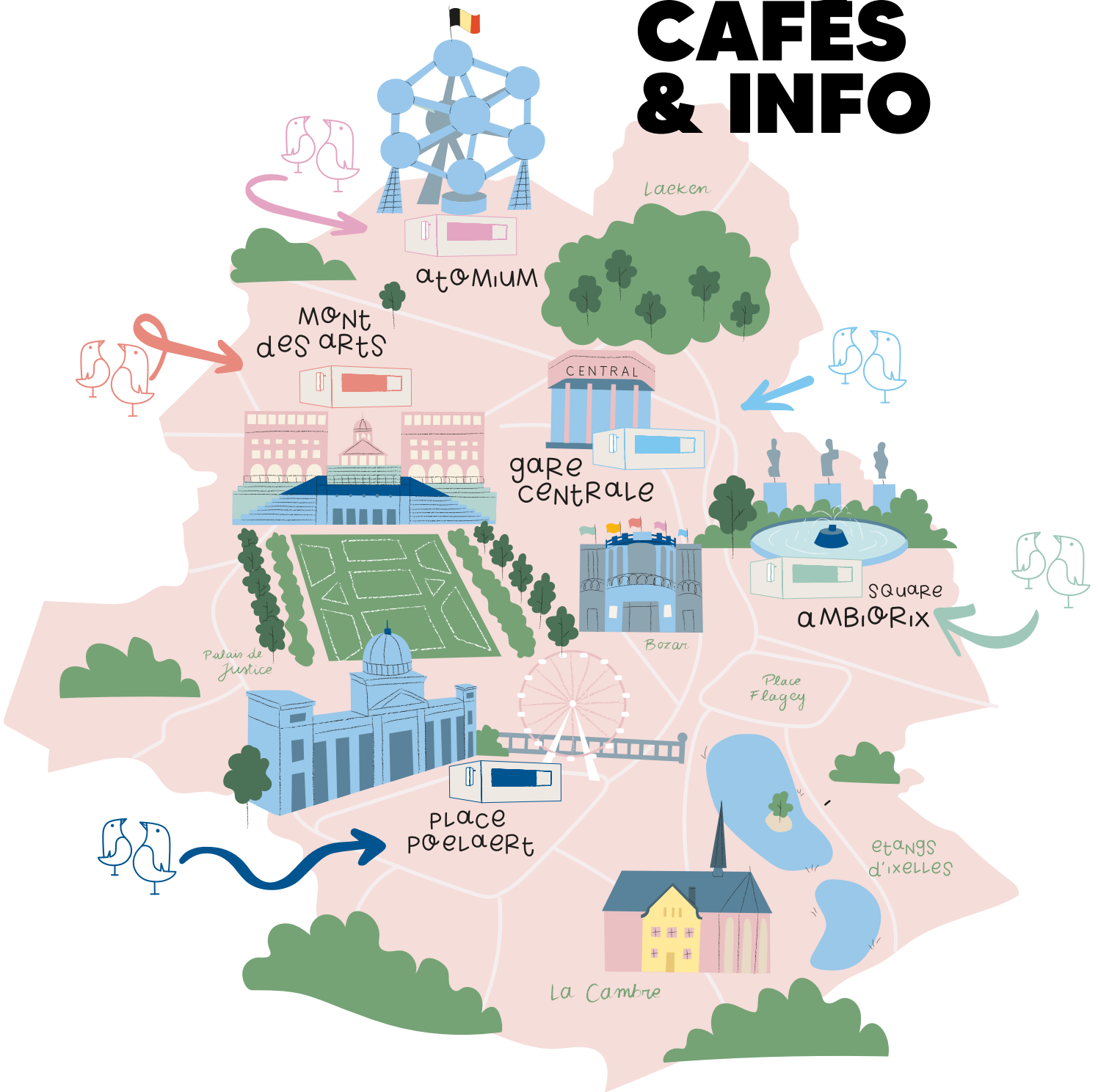
WE HAVE COUCOU BARS
ALL ACROSS BRUSSELS !

**DISCOVER THEM
ALL SUMMER !**



COUCOU.BRUSSELS

OPEN AIR CAFÉS & INFO



Middle of Place Poelaert

OPENING 15.05
EVERY DAY
FROM NOON TO 8PM



Middle of Square Ambiorix

OPENING 15.05
EVERY DAY
FROM NOON TO 8PM



In front of Gare Centrale

OPENING 15.05
EVERY DAY
FROM NOON TO 8PM



On top of Mont des Arts

OPENING 15.05
EVERY DAY
FROM NOON TO 8PM



In front of the Atomium

OPENING 15.05
EVERY DAY
FROM NOON TO 8PM